

STEM club online-Maths challenge: Sudoku challenge

A sudoku is a puzzle which involves mathematical thinking. Players insert the numbers one to nine into a grid. The numbers appear once in each horizontal line, vertical line, and square.

1. Never done a sudoku?

Here is a video to show you how you can play a sudoku:

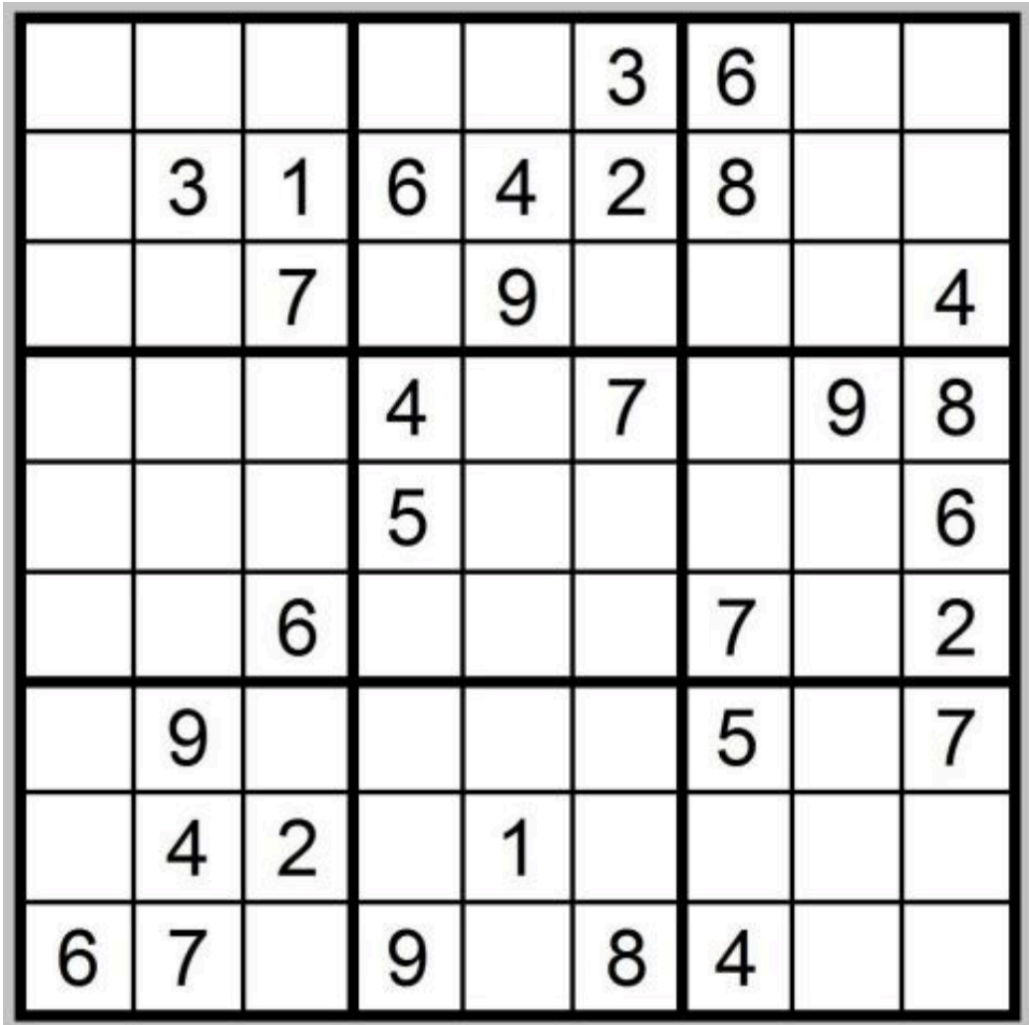
<https://www.loom.com/share/8b0dd23cb5b9483f92d666cb6b337238>

Have a go at finishing the sudoku I started (by printing or copying it out):

	6		3			8		4
5	3	7		9				
	4				6	3		7
	9			5	1	2	3	8
7	1	3	6	2			4	
3		6	4				1	
				6		5	2	3
1		2			9		8	

2. Already know how to play sudoku?

Have a go at this harder puzzle (print or copy out)



OR

Go on this website: <https://sudoku.com/>

Sudoku.com

Difficulty: Easy

Check for Mistakes

00:08

New Game

2			5		7			
		6	2	3		1		
7	5	3	6				4	8
			8			4	5	1
3				6		9		2
	8	5		2			3	
5		1			9	6		
	4	9	7					3
8	2	7			6		9	

1	2	3
4	5	6
7	8	9
OFF Notes	Hint	
Undo	Erase	

If you turn notes on you can type small numbers at the top of the box, this helps to work out what the number is.

3. Finished?

- Send me a photograph of your completed grid

Or

5	3	4	6	7	8	9	1	2
6	7	2	1	9	5	3	4	8
1	9	8	3	4	2	5	6	7
8	5	9	7	6	1	4	2	3
4	2	6	8	5	3	7	9	1
7	1	3	9	2	4	8	5	6
9	6	1	5	3	7	2	8	4
2	8	7	4	1	9	6	3	5
3	4	5	2	8	6	1	7	9

- If you worked online send me a print screen

Sudoku.com

Difficulty: Easy

Check for Mistakes

