



The Academy
at Shotton Hall



YEAR 8

SURVIVAL

GUIDE

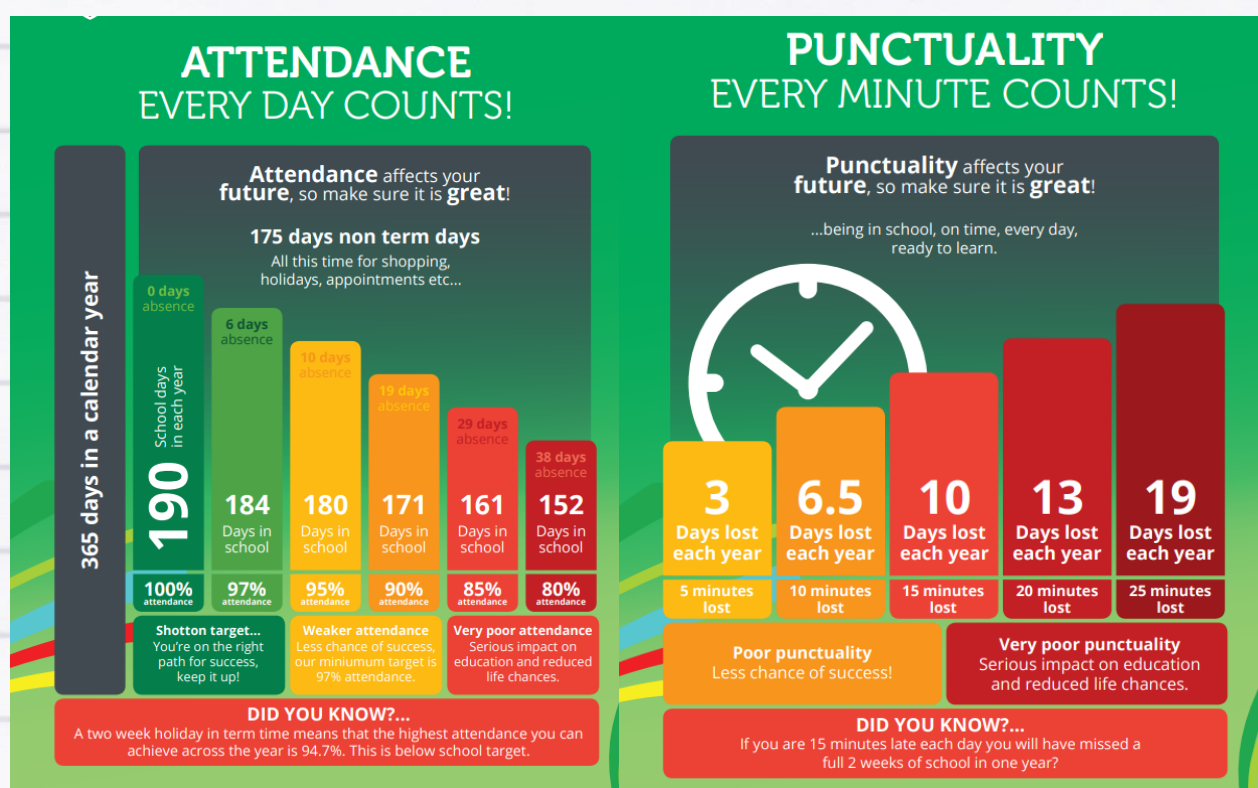


Welcome

We have put together this A-Z 'survival guide' for parents of students in Year 7; hopefully this document will provide you with all the information you need to know for the upcoming year but if you have any questions, please feel free to contact us on 0191 518 0222 or email your child's Learning Manager at michelle.armstrong@shottonhallacademy.co.uk

Attendance

100% attendance for each student is our target. Any student with attendance below **90%** is classed as a persistent absentee and may be placed on an attendance action plan. This can be legally enforced.



Assessments

Assessments for Year 8 students will take place termly on the following dates:

- Autumn term assessments- week commencing 3rd November 2025
- Spring term assessments - week commencing 2nd February 2026
- Summer term assessments – week commencing 8th June 2026

Revision programmes for this should start at least 3 weeks prior to the assessment week.

Behaviour

To ensure effective teaching and learning takes place positive behaviour in all aspects of Academy life is essential. The academy seeks to create a caring and learning environment by:

- Promoting self-esteem, self-discipline and respect for authority with relationships based on mutual respect
- Promoting excellent discipline and behaviour
- Providing a safe environment free from disruption, aggression and bullying which protects the wellbeing of all in the school community
- Encouraging a positive relationship with parents and carers to ensure a collaborative approach supports the implementation of the school's policies and procedures.

The Academy wishes to emphasise to all parents and students that failure to conform to the high standards expected by all, may result in exclusions. For example, if a student:

- Threatens, harasses or is involved in sexual misconduct towards any member of the school community
- Swears at or is personally insolent to a member of staff
- Makes an unprovoked physical or verbal assault on another student
- Is involved in bullying of another student
- Is involved in activities which are prejudicial to the health and safety of members of the school community
- Uses ICT, digital devices or social media in a way that would be construed as harassment and/ or bullying of members of the school community or invasion of their privacy
- Uses audio or visual recordings of members of the school community in a way which could be construed as harassment, bullying or an invasion of their privacy
- Is involved with illegal drugs or alcohol during the school day
- Brings a weapon into school
- Makes false allegations against a member of staff
- Assaults a member of staff.

Counselling and pastoral care

The Academy is committed to providing a supportive environment with high academic standards, which will enable students to flourish socially, emotionally and academically. We recognise that our students are growing up in a complex society and that they may at times require additional support to meet these challenges. The Academy has its own counsellors who offer support and advice to students, families and staff. We encourage families to contact Learning Managers to request counselling referrals as needed.

While most cases will require parental consent prior to the referral, there is the opportunity for older students to self-refer if they feel they would benefit.

Day structure

Each student starts the day in sept followed by five lessons broken up by a morning break and lunch as follows:

Period	Timing for students
Pre school	8.20am – 8.30am
Sept	8.30am – 8.50am
Period 1	8.50am – 9.50am
Period 2	9.50am – 10.50am
Break	10.50am – 11.10am
Period 3	11.10am – 12.10pm
Period 4	12.10pm-1.10pm
Lunch	1.10pm – 1.50pm
Period 5	1.50pm – 2.50pm

Detentions

Detentions will be set and recorded on INSIGHT, parents will also be emailed the night before. Detentions must be served and are not optional, failure to attend detentions will lead to an escalation in sanctions.

Emails

Emails are a key way of communicating between staff, students and parents both within and outside of school. Therefore, email etiquette is really important. Students will need to start emails with a salutation - perhaps a simple 'Hello' or 'Hi Sir', or, if being formal, 'Dear Miss'. They need to remember to use formal English and not use slang or text speak. When they have finished the email they should sign off with a Thank you/Thanks/Yours sincerely/Regards.

Equipment

It is compulsory for students to carry a pencil case with the following equipment: 2 pens, 2 pencils, eraser, ruler, 2 highlighters and a scientific calculator -Casio FX-85GT Plus. In addition to this, students will need a bag large enough to carry an A4 size file/exercise book. Equipment checks will be carried out by sept tutors, Learning Managers and the Senior Leadership Team and sanctions will be issued for missing stationery. The LRC has a stationery shop where equipment can be purchased if broken or missing.

E-Safety

At Shotton Hall we take the safety of our students very seriously including their online life, which an increasing number of our students are accessing on a regular basis. Here are a few hints and tips to help you keep them safe online.

1. Have conversations about e-safety
2. Take an interest in what they are accessing online and explore it together
3. Know who your child is talking to online – we strongly recommend they do not “add” people they do not know to friends’ lists on social media
4. Set rules and agree boundaries about frequency, content and their posts on social media
5. Make sure content is age appropriate
6. Use parental controls to filter, restrict, monitor or report content
7. Check they know how to use privacy settings and reporting tools for any issues that may arise
8. Encourage respect for others – stamp out cyber bullying

If you have any concerns about online abuse or the way someone has been contacting your child online please contact CEOP.



Expectations

The Academy has high expectations for students in terms of attitude, effort, conduct, presentation and learning. A range of sanctions can and will be used if needed. This includes detentions after school. Detentions will be scheduled on INSIGHT by the teacher; it is the responsibility of parents and students to be aware of this and plan accordingly.

Grades

Upon arrival at the Academy in September, students will be allocated a baseline grade for each subject based on their Key Stage 2 information. Targets are set accordingly each year and for their GCSEs.

Students in Key Stage 3 are expected to achieve grades between 1- 4 with two sub levels of progress expected each year. In Key Stage 4 we would expect students to show continued improvement towards their GCSE target grades.

Shotton Hall Grades

New GCSE outcomes																		
1					2			3			4			5	6	7	8	9
1e	1d	1c	1b	1a	2c	2b	2a	3c	3b	3a	4c	4b	4a					

Homework

Homework as a vital part of learning. Students will receive one piece of homework for every three hours of each subject. Homework can be monitored through INSIGHT.

Knowledge Organisers

Students will be given Knowledge Organisers for most subjects at the start of each term. These will contain the key information that units will cover and would be suitable to help students revise at home in preparation for assessments. Knowledge Organisers may cover key vocabulary, concepts and ideas related to the work carried out in lessons. Knowledge Organisers can be found on the students' POD homepage. We are hoping to create independent and resilient learners so that students are well prepared for Key Stage 4.

INSIGHT

All parents and students will be allocated login details and a password for INSIGHT. This site allows access student timetables, attendance, data, reports, homework details and more. You can access the site here tasc.shottonhallacademy.co.uk/INSIGHT/. Please contact insight.help@shottonhallacademy.co.uk if you experience difficulties.

Meal times

All students will remain on school premises at lunchtime and are able to bring in a packed lunch. Alternatively, a school meal can be purchased for £2.80 for a packed lunch meal deal or for the main meal which is a main dinner with dessert or bottle of water. The school also runs a free breakfast club from 8am and other refreshments and snacks are available at break time.

Medication

At The Academy at Shotton Hall we are committed to supporting students with their medical needs. Our medication policy is in place so that staff and parents are aware of the guidelines we will be working to in connection with administering medication in school. We ask parents to sign a consent form for the administration of medication to take place. Parents must come into school to collect any unused medication at the end of every half term or term.

Students may not carry any medication in school apart from an inhaler or EpiPen. Further information is available on our website.

Office 365

Every student at the Academy also has an Office 365 account. This account allows you to access your school Outlook account (your email and calendar), your OneDrive folder and our online virtual learning environment Student POD. As a member of Shotton Hall

Academy you get the complete Microsoft Office suite for free to download onto your home computer (see website for details). It is recommended that you download and install office 365 email and the following apps onto your personal devices (mobile phone and tablet); OneDrive, Word, Excel, SharePoint, OneNote, Powerpoint.

To log on visit www.shottonhallacademy.co.uk and click the Office 365 link or go to portal.microsoftonline.com and use your school email and password to log in. The electronic calendar for the year is built into POD.

Ofsted

Please log into parent view to give Ofsted your opinion on how you feel your child is doing at school. We would also appreciate you get in touch with school should you have any concerns prior to raising them through the parent view to allow us the opportunity to resolve them. <https://parentview.ofsted.gov.uk/>

Parents' evenings

The Year 8 parents' evening will be:

Tutors – 2ND October 2025

Subject teachers – 19th March 2026

PE Kit Policy

School anticipate the vast majority to be able to be physically active during PE lessons by participating in meaningful activity. Wearing the correct PE kit is vital to achieve this. We acknowledge that there are occasions that due to injury or illness students may not be able to participate physically however they can participate in the lesson as a coach, referee or assist evaluating student performance. Therefore, all students must be appropriately dressed to participate in these learning activities safely.

PE kit expectations

Students are required to bring PE kit to all lessons even if ill or injured unless it is unreasonable to do so (e.g. broken leg).

Staff will endeavour to provide clean kit for students who do not bring their own and are physically able to change.

Procedure for students who are ill/ injured

Students are required to bring a note explaining the reasons for non-participation.

Students will get changed into their PE kit.

If students do not have their own kit, they will be asked to wear school kit and their own shoes (as they are not participating this will not be an issue).

Students will be instructed to act in a non-physical role e.g. referee.

If students refuse to change sanctions will be imposed.

Students who arrive at PE without the correct PE kit are expected to wear a school kit that has been laundered.

Please feel free to regularly check your child's exercise book and quality of homework. You know your child better than anyone so please let us know if you are unhappy with the standard of work they are producing.

WORK CODES
 Positioned in the top left hand corner
HW - Homework
CW - Classwork
A - Assessment
PL - Planning
N - Notes

THE DATE
 Positioned in the top right hand corner
 Number, month, year
 Comma to separate date and month from year
 Underlined

THE TITLE
 Positioned in the middle
 Use capital letters
 Underlined

NUMBERS
 Add numbers in the margin if required

Leave 2 line spaces before writing

Leave 1 line space before writing title

Leave 1 line space between paragraphs

HW		29 January, 2020
	<u>Evaluating Macbeth's Character</u>	
	<u>Subtitle (if needed)</u>	
1.	Your writing needs to start at the left-hand side of the page, right next to the margin. You need to use the whole of the line in your exercise book before you begin on a new line.	
	If you need to break for a new paragraph, make it visible by leaving a line space . This will make your work neater which will help your teacher (and your peers) to read and understand your writing.	
	Your handwriting should always be your very best and in either blue or black pen. Drawings and diagrams should always be in pencil, using a ruler. There should be no graffiti on pages.	
	Clearly mark if you are <i>peer assessing</i> or <i>self assessing</i> . Remember when giving WWW and EBI comments to be kind, helpful and specific .	

Reading

Reading is the single most important activity that helps students succeed in school.

Reading for pleasure should be part of all students' daily routine. We have a library within school (LRC), that students can borrow books from. We also recommend that all students enrol in Durham online library services (libraryonline.durham.gov.uk).

Reports

Full, end of year reports will be emailed to parents in June 2026.

Interim reports outlining achievement and progress will also be issued in October and March.

RSHE (Relationships, Sex and Health Education) – Y8



To embrace the challenges of creating a happy and successful adult, pupils need knowledge that will enable them to make informed decisions about their wellbeing, health, and relationships and to build their self-efficacy. Pupils can also put this knowledge into practice as they develop the capacity to make sound decisions when facing risks, challenges, and complex situations. As part of the 2020 statutory RSHE guidance students will have the opportunity to explore a variety of key topics within P4L, PE, Science, ICT and Food Technology. This will include:

P4L	PE	Food Technology	Science	ICT/ Computer Science
Prejudice and discrimination: religious Risky behaviour Drugs and alcohol Balanced lifestyle – healthy eating and exercise First aid: asthma and allergies Body image including cosmetic surgery Sleep Gaming and screen time Mental wellbeing Relationships and consent FGM Safety Online Social media Radicalisation and extremism Gambling Exploitation Weapons and gangs	The relationship between health and fitness and the role that exercise plays in both The component of fitness and benefits of sport Physical, emotional, and social health, fitness, and wellbeing	Understanding the key principles of nutrition and health lifestyle To be able to link the correct cookery methods to maintain both nutritional content and a balanced diet Food safety and personal hygiene relating to food storage and preparation	Factors affecting gaseous exchange (smoking) Impact of Exercise Balanced Diet Unhealthy Diet Alcohol Drugs Smoking	Searching the internet Discussing trustworthiness and bias in information Online Safety including passwords Cyberbullying Digital footprint Keyboard warriors Digital permeance Grooming and media manipulation (not all videos/images online are real)

You can also gain further information with regards to the key content which is covered during Sept time and assemblies on the school website:

<http://www.shottonhallacademy.co.uk/curriculum/subjects/relationships-and-sex-education-rse>

We would welcome your feedback on our RSHE provision. If you would like to get in touch, please email: Rachel.peele@shottonhallacademy.co.uk

School clubs

We offer an extensive variety of extra-curricular activities during the school day and after school. Full details of individual clubs, days and times are available on the school website.

Social media at Shotton Hall

The Academy regularly posts stories and information on our social media pages. Please follow us at: Facebook /shottonhallacademy Twitter @shottonhall Instagram @shacademy.

Social media – students and parents

- We expect all parents and students be respectful to the Academy and current or previous staff and or students when making any statement or comment on social media, acknowledging that they are personally responsible for all communications which are published on the internet.
- Parents and students should not use social media to:
 - defame or disparage the Academy or current or previous staff or students
 - harass or unlawfully discriminate against current or previous staff or students
 - make false or misleading statements about the Academy or current /previous staff or students
 - impersonate the Academy or current or previous staff or students
 - make any comments or postings which have the potential to bring the Academy into disrepute or damage our reputation
- Parents and students must agree to immediately remove any content from social media which the Academy considers, in its sole discretion, to be inappropriate and unacceptable

Failure to do so could result appropriate action being taken by the Academy.

Student POD



The Academy at Shotton Hall has a virtual learning environment called Student POD. Student POD has all the information about the subjects you study including knowledge organisers, topic resources and helpful tools and information for revision. This is where all online textbooks for your children are stored. You log onto Student POD by logging on to your Office 365 account and clicking the SharePoint app.

Text messaging

The Academy will use a text message service to contact parents with updates and reminders for any unauthorised absences. Please ensure you inform the school if you change your number.

Timetable

We run on a two week timetable (A and B) made up of 25 lessons each week. In Year 8 **most** students' timetables consists of the following lessons, although some students receive extra support in maths and English.

Subject	Number of hours	Subject	Number of hours
English	8	PE	3
Maths	8	P4L	2
Science	9	Performing Arts	3
French	4	Computer Studies	3
Geography	3	Technology	2
History	3	Art	2

Tutor team & Learning Manager

Y8 Learning Manager – Michelle Armstrong michelle.armstrong@shottonhallacademy.co.uk

S1	Mr Vaudrey paul.vaudrey@shottonhallacademy.co.uk	P1	Mrs Mills ashley.mills@shottonhallacademy.co.uk Ms Bowans amy.bowans@shottonhallacademy.co.uk
S2	Mrs Elliott rachel.elliott@shottonhallacademy.co.uk	P2	Miss Robinson Primrose gillian.robinsonprimrose@shottonhallacademy.co.uk
S3	Mr Robertshaw martin.robertshaw@shottonhallacademy.co.uk	T1	Mr Elstob eden.elstob@shottonhallacademy.co.uk
E1	Mrs Bradley amanda.bradley@shottonhallacademy.co.uk	T2	Mrs Murphy rebecca.murphy@shottonhallacademy.co.uk
E2	Ms Batey alison.batey@shottonhallacademy.co.uk	T3	Miss Murray jade.murray@shottonhallacademy.co.uk
E3	Mr Tiplady neil.tiplady@shottonhallacademy.co.uk		

EMAILING STAFF

If you have any queries please email the main school - enquiries@shottonhallacademy.co.uk adding in the name of your child's tutor or learning manager in the subject box. Alternatively, please phone us on 0191 518 0222 (*bearing in mind teachers will be in class during school hours*).

Uniform

EVERYDAY

- Plain white school shirt buttoned to the neck with school tie
 - Plain black formal straight cut trousers - no jeans/ jean style with obvious back pockets, leggings canvas or stretchy style
 - Plain black, formal straight cut shorts- just above the knee. No jeans, cargo style, leggings, stretchy or tracksuit style. PE shorts, in all styles are not allowed
 - Compulsory twin pleated knee length skirt only available from Emblematic (existing skirts also allowed)
 - Blazer with school badge and **RED** strip purchased from Emblematic.co.uk/schools/shothall
 - Plain black leather or leather-style shoes or boots (without heels), no trainers or plimsolls
 - Belts should be black and discreet
- NB - Please exercise caution when purchasing school uniform from high street shops as they may not be to The Academy standards. If you are unsure, please contact school to clarify prior to removing tags.

PE KIT

- Red and black school PE top- purchased from Emblematic.co.uk/schools/shothall
- Black shorts/tracksuit bottoms or leggings - can be purchased anywhere
- Trainers must be worn in PE lessons (*plimsolls, converse, or similar canvas type shoes are not suitable*)
- It is advisable that students wear football boots for sports such as football and rugby
- Optional, for colder months, a black jumper/black tracksuit top to wear over the top of PE t-shirt. Black jumpers can be purchased from Emblematic.co.uk/schools/shothall
- A black base layer can be worn under PE t-shirts during colder months

GENERAL APPEARANCE

- Hair should be a natural colour (one colour only)
- Students may wear one small single metal stud in each earlobe - no other piercings
- No necklaces, bracelets or rings
- No false, gel or acrylic nails and no bright colour nail varnish
- No false eyelashes or eyelash extensions
- Subtle make-up

UNIFORM MONITORING

Any student that does not follow the guidance above will be placed on a uniform monitoring programme, until the situation is remedied.

Valuables

Students are responsible for their own possessions and should only bring into school what is essential. Digital equipment such as ipads, games consoles, earphone and music players are NOT allowed into school.

It is not permitted to bring expensive items (including IT equipment) or large sums of money into school. Any loss or damage of expensive item which are brought in against school expectations is the responsibility of the parent and not the school.

YEAR 8 VITAL HINTS AND TIPS

- Be kind and thoughtful to your family in the morning – just get out of bed when asked the fourth time! Start your day in a pleasant manner so the positive feeling may continue throughout your school day.
- Check INSIGHT in a timely fashion, so that you may have your bag packed the evening before and everything you need in order for the day ahead will be to hand.
- That's right... you still MUST bring a bag to school with your pencil case full of equipment, any books needed for that day, completed homework in a plastic wallet and all equipment needed for your school day, (PE kit, ingredients, drink bottle).
- Ties are £4.99 each... so do not lose it!
- Wherever possible, write your name on your belongings. Even Y8s get muddled up in PE.
- Follow the guidelines on uniform standards and expectations. Then you will not be in isolation with your tutor!
- Keep several copies of your timetable: in your planner, top pocket and one at home.
- There is never a good reason to be disrespectful to another person. Whether it be your peers, our teaching staff or our support and kitchen staff; everybody deserves respect.
- Be polite. Say please and thank you. Hold doors open for people. Clear up your own mess. Place rubbish in the bin. Smile.
- Take responsibility for your actions. Everybody can make a mistake. If you are honest then we can help you fix it. Always tell the truth.
- Ask for help if you ever feel you need it. Your tutor, your Learning Manager, our Pastoral staff, even the school counsellor at break time drop-ins, they are all supportive and here to assist you however they can.